

IDEAL® Heavy-Duty
“MD” No-Hub Coupling
provides a cost-effective solution
for heavy-duty applications



Heavy-Duty Performance at a Moderate Price

The IDEAL® Heavy-Duty “MD” No-Hub Coupling is engineered to provide all the extra holding power of a heavy-duty coupling without all the extra cost. The “MD” coupling installs at 80 in.-lbs. of screw torque and features IDEAL’S extra wide, patented, bi-directional shield and specially beaded gasket. Teamed with an additional complement of 9/16” wide clamps, they combine to exert exceptional hold on the pipe for a positive, reliable seal. And the user-friendly 5/16” hex-head screw eases installation.

Look for the distinctive yellow shield to be sure you are getting the IDEAL® Heavy-Duty “MD” No-Hub Coupling. Your reputation is safe and the job is secure when you choose IDEAL® No-Hub Couplings.

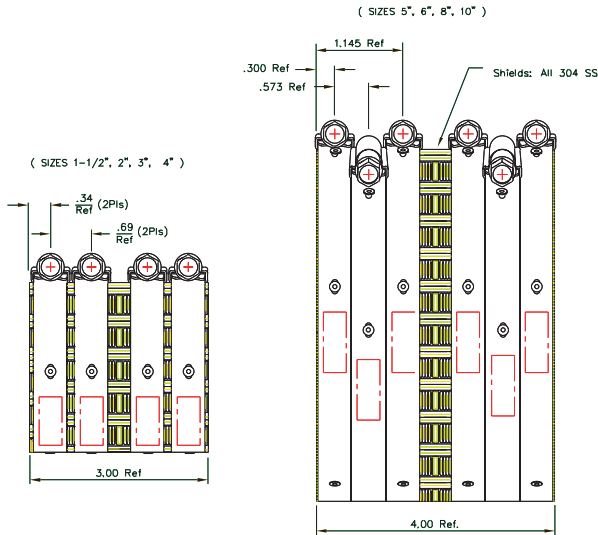
IDEAL • 3200 Parker Drive • St. Augustine, FL 32084-0897
Telephone: 904-829-1000 • Fax: 904-825-1121
www.idealclamps.com

A Tomkins Company



IDEAL® Heavy-Duty "MD" No-Hub Couplings

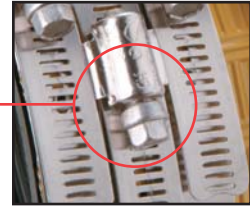
Size	Part No.	Installation Torque (inch-pounds)	No. of Clamps Per Coupling
1-1/2"	6217Y8G	80	4
2"	6218Y8G	80	4
3"	6219Y8G	80	4
4"	6220Y8G	80	4
5"	6221Y8G	80	6
6"	6222Y8G	80	6
8"	6223Y8G	80	6
10"	6230Y8G	80	6



Features:

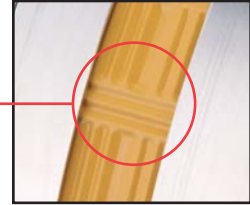
User Friendly 5/16" Hex Head Screw

The new 5/16" hex head screw is designed to apply the full load of 80 in.-lbs. of installation torque to the band/shield assembly.



Patented Bi-directional Shield Design

Our unique shield design employs bi-directional corrugations for maximum transfer of pressure from the clamps to the gasket. This patented* shield design adjusts to differences in the circumference and outside diameters of the pipes being joined. This eliminates gasket wrinkling and thereby eliminates leak paths. These bi-directional corrugations also create sealing pressure in both parallel and transverse patterns on the gasket and pipe. This works to avoid pullout failures and provides a positive, reliable seal.



Specially Beaded Gaskets

The heavy-duty "MD" coupling utilizes a specially beaded gasket that mates with the shield and clamping forces for superior sealing pressure and holding power. IDEAL® gaskets comply with ASTM C564.



Floating Eyelet Design

Floating eyelets fasten the clamps to the shield, allowing the clamp band and shield to move independently. This freedom prevents the shield from crimping during tightening, which can lead to leakage later on.



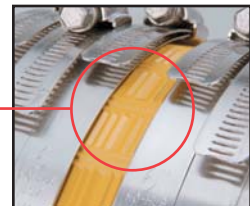
Mechanical Interlocking Clamp Design

IDEAL® clamps feature a one-piece screw housing that mechanically interlocks the housing to the band. This one-piece housing design eliminates leak paths that can occur in staked or welded clamps.



Yellow Shield

The distinctive yellow shield quickly identifies the new IDEAL® Heavy-Duty "MD" Couplings.



*U.S. Patent No. 5,431,458

Description: Couplings consist of gasket and shield assemblies. The shield assemblies have four or six clamps depending on size. The clamps are fastened with eyelets to the bi-directional corrugated shield.

Materials: Steels used in couplings are stainless steels. Shields, bands and housings are AISI 304. Screws and eyelets are AISI 305. Gaskets are made from an elastomeric compound that meets the requirements of ASTM C564.

Specifications: Couplings conform to CISPI 310, Factory Mutual CN 1680. Couplings comply with ASTM C564, ASTM C1540, IAPMO file #3198, Commonwealth of Massachusetts CMR-248 and City of New York MEA 253-98-E. Gaskets are made from an elastomeric compound that meets the requirements of ASTM C564.