

IDEAL® Heavy-Duty
No-Hub Couplings meet the
demands of the toughest applications



Installs with 80 in.-lbs. of Screw Torque

The IDEAL® Heavy-Duty No-Hub Coupling installs with 80 in.-lbs. of screw torque and boasts an ultimate torque rating exceeding 100 in.-lbs. Our patented, extra wide bi-directional shield is now constructed with a heavier gauge stainless steel. The mechanically interlocked 9/16" wide clamps have also been "beefed up" with a heavier gauge stainless steel and a 3/8" hex head screw. These changes, teamed with our specially beaded gasket, enable our new Heavy-Duty Coupling to exert exceptional hold on the pipe for a positive reliable seal.

Look for the distinctive green shield to be sure you are getting the IDEAL® Heavy-Duty No-Hub Coupling. Your reputation is safe and the job is secure when you choose IDEAL® No-Hub Couplings.

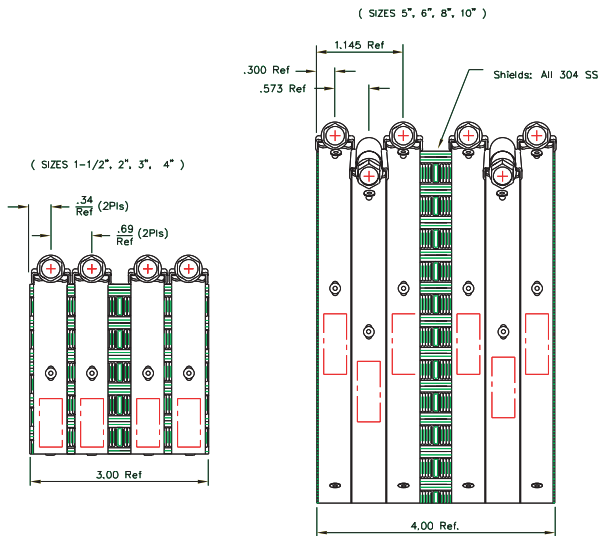
IDEAL • 3200 Parker Drive • St. Augustine, FL 32084-0897
Telephone: 904-829-1000 • Fax: 904-825-1121
www.idealclamps.com

A Tomkins Company



IDEAL® Heavy-Duty No-Hub Couplings

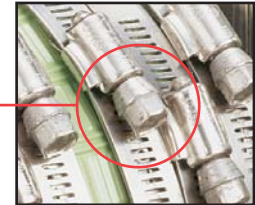
Size	Part No.	Installation Torque (inch-pounds)	No. of Clamps Per Coupling
1-1/2"	6217H8G	80	4
2"	6218H8G	80	4
3"	6219H8G	80	4
4"	6220H8G	80	4
5"	6221H8G	80	6
6"	6222H8G	80	6
8"	6223H8G	80	6
10"	6230H8G	80	6



Features:

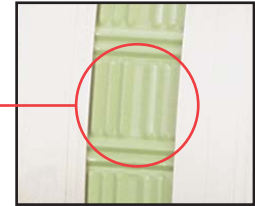
Larger Hex Head Screw

The 3/8" hex head screw is designed to apply the full load of 80 in.-lbs. of installation torque to the band/shield assembly.



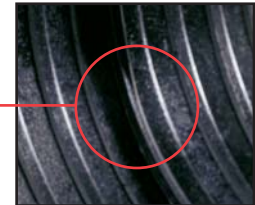
Patented Bi-directional Shield Design

Our unique shield design employs bi-directional corrugations for maximum transfer of pressure from the clamps to the gasket. This patented* shield design adjusts to differences in the circumference and outside diameters of the pipes being joined. This eliminates gasket wrinkling and thereby eliminates leak paths. These bi-directional corrugations also create sealing pressure in both parallel and transverse patterns on the gasket and pipe. This works to avoid pullout failures and provides a positive, reliable seal.



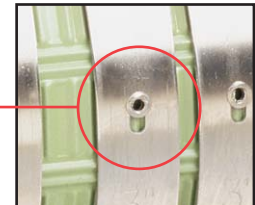
Specially Beaded Gaskets

The heavy-duty coupling utilizes a specially beaded gasket that mates with the shield and clamping forces for superior sealing pressure and holding power. IDEAL® gaskets comply with ASTM C564.



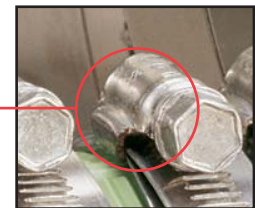
Floating Eyelet Design

Floating eyelets fasten the clamps to the shield, allowing the clamp band and shield to move independently. This freedom prevents the shield from crimping during tightening, which can lead to leakage later on.



Mechanical Interlocking Clamp Design

IDEAL® clamps feature a one-piece screw housing that mechanically interlocks the housing to the band. This one-piece housing design eliminates leak paths that can occur in staked or welded clamps.



Green Shield

The distinctive green shield quickly identifies the IDEAL® Heavy-Duty Couplings.



*U.S. Patent No. 5,431,458

Description: Couplings consist of gasket and shield assemblies. The shield assemblies have four or six clamps depending on size. The clamps are fastened with eyelets to the bi-directional corrugated shield.

Materials: Steels used in couplings are stainless steels. Shields, bands and housings are AISI 304. Screws and eyelets are AISI 305. Gaskets are made from an elastomeric compound that meets the requirements of ASTM C564.

Specifications: Couplings conform to CISPI 310, Factory Mutual CN 1680. Couplings comply with ASTM C564, ASTM 1277, IAPMO file #3198, Commonwealth of Massachusetts CMR-248 and City of New York MEA 253-98-E. Gaskets are made from an elastomeric compound that meets the requirements of ASTM C564.

Form No. 24000 01



A Tomkins Company

